

LIQUID 2012
SNOW TOURS

JAPAN GUIDE

FEATURED RESORTS
HAKUBA & NISEKO
MYOKO KOGEN & SHIGA KOGEN & NOZAWA ONSEN

FOR THE LATEST DEALS HEAD TO
SKI-RESORTS-JAPAN.COM



WHY TRAVEL WITH US?

Liquid Snow Tours has managed and taken 1000s of clients over to Japan for the last 6 years. We specialise in the Hakuba Ski Region, having our own lodge (The Lab Hakuba) in an easy to find location, meaning you can ask us any questions or come and share an après drink with us.

We're there to experience your holiday with you!

JAPAN RESORT MAP



CONTENTS

POPULAR VALUE & DELUXE SKI PACKAGES	1
HAKUBA RESORT INFO & ACTIVITIES	2
HAKUBA DELUXE STAY OPTIONS	3-4
HAKUBA STANDARD STAY OPTIONS	5
NISEKO RESORT INFO & ACTIVITIES	6
NISEKO DELUXE STAY OPTIONS	7
NISEKO STANDARD STAY OPTIONS	8
NOZAWA INFO & STAY OPTIONS	9
SHIGA KOGEN INFO & STAY OPTIONS	10
MYOKO KOGEN INFO & STAY OPTIONS	11
TOKYO INFO & STAY OPTIONS	12

WHAT CAN WE OFFER YOU?

- Tailored Quotes
- Flight Quotes & Bookings
- Guarantee your money is secure with the Travel Compensation Fund

- Ski/Snowboard Hire or Lessons
- Lift Passes & Night Skiing
- Day Tours
- Shuttles between your accommodation and all major ski fields
- Free pick ups/drop offs from your bus or train
- The best local knowledge and advice on all ski areas, where to eat or take an onsen

VALUE PACKAGES

7 NIGHT HAKUBA POWDER PACKAGE

PACKAGE INCLUSIONS:

- » Return coach transfer Tokyo Narita - Hakuba
- » 7 nights at The Lab Hakuba (multi share room)
- » Hot breakfast daily
- » 5 days resort lift passes including 4 days pass (valid at Happo One, Hakuba 47, Hakuba Goryu, Iwatake, Tsugaike) & 1 day Cortina tour including lift pass, lunch & an onsen
- » All resort mountain transfers
- » In resort hosting and tour office
- » 2hrs mountain guiding advanced skiers/boarders

\$1145 PER PERSON

+ ADD RETURN FLIGHTS FROM \$650
+ TAXES FLYING SINGAPORE AIRLINES

16 NIGHT HAKUBA/NISEKO MULTI RESORT PACKAGE

PACKAGE INCLUSIONS:

- » Return coach transfer Tokyo - Hakuba
- » 7 nights The Lab Hakuba (multi share room)
- » Hot breakfast daily
- » 5 days resort lift passes including 4 days pass (valid at Happo One, Hakuba 47, Hakuba Goryu, Iwatake, Tsugaike) & 1 day Cortina tour including lift pass, lunch & an onsen
- » All resort mountain transfers
- » In resort hosting and tour office
- » 2hr mountain guiding advanced skiers/boarders
- » 2 nights at the Listel Hotel Tokyo - twin share ensuite rooms
- » Return flights Tokyo - Sapporo
- » Return Sapporo transfers - Niseko
- » 7 nights at Slowlife Lodge Niseko - quad share room
- » Continental breakfast daily
- » In resort hosting and service office
- » 5 days Niseko multi resort ski pass

\$2295 PER PERSON (BASED ON 4 PEOPLE)

+ ADD RETURN FLIGHTS FROM \$650
+ TAXES FLYING SINGAPORE AIRLINES

DELUXE PACKAGES

7 NIGHT HAKUBA DELUXE PACKAGE

PACKAGE INCLUSIONS:

- » 4 day JR East rail pass non consecutive
- » Private meet & greet Nagano Station and transfer to Hakuba accommodation
- » 7 nights at the Phoenix Hotel - Twin share room
- » Buffet breakfast daily
- » Complimentary bottle of wine at Phoenix bar
- » 5 days resort lift passes including 4 days pass (valid at Happo One, Hakuba 47, Hakuba Goryu, Iwatake, Tsugaike) & 1 day Cortina tour
- » All resort mountain transfers
- » In resort hosting and tour office
- » 2hrs mountain guiding advanced skiers/boarders

\$1595 PER PERSON

+ ADD RETURN FLIGHTS FROM \$650
+ TAXES FLYING SINGAPORE AIRLINES

NISEKO UPPER VILLAGE FAMILY PACKAGE (BASED ON 4 PEOPLE)

PACKAGE INCLUSIONS:

- » Meet and Greet Sapporo Chitose airport
- » Transfers Sapporo to Niseko accommodation
- » 7 nights at Powder Tracks apartments in upper village (2 bedroom, 1 bathroom)
- » 5 days Niseko multi resort lift pass, including Grand Hirafu, Higashiyama and Annupuri
- » In resort hosting and tour office
- » Ski concierge service

\$1690 PER PERSON

SAVE \$200+ BY TRAVELLING IN
EARLY DEC, FEB OR MAR

+ ADD RETURN FLIGHTS FROM \$950
+ TAXES FLYING JAL



RESORT INFO

Hakuba is located around 300kms northwest of Tokyo, in the heart of the Japanese Northern Alps. The valley incorporates 10 ski resorts, over 200 runs, 139 lifts, huge towering peaks, a local village, ski/snowboard shops, a combination of traditional or western dining and après entertainment. This combination of facilities, tradition, and an annual snowfall average of over 11 metres makes Hakuba the perfect destination for your next ski holiday.

Hakuba is part of the Nagano prefecture of Japan, which played host to the 1998 Winter Olympic Games. Hakuba hosted the ski jumping event as well as the super G & some downhill skiing. The Olympics left a good infrastructure in the area, making it easy to go on day trips to other areas. They also left a thriving après ski scene in Hakuba, where there is no shortage of international restaurants, bars, and traditional Japanese onsens (natural hot springs).



DAY TOURS & ACTIVITIES

SNOWMONKEY & SNOWMOBILE TOUR

A full day trip departing Hakuba taking you to a closed off ski area in Shiga Kogen dedicated solely to snowmobiling. Get your blood pumping with morning snowmobiling before feasting on a full buffet lunch at the Prince Hotel, then stopping off at Jigokudani Monkey park to see the snow monkeys in their natural environment.

\$260 per person

TEMPLE/SNOWMONKEY TOUR

Full day trip departing Hakuba taking you to Zenkoji temple in Nagano, traditional Japanese lunch then off to Jigokudani Monkey park to see the only snow monkeys of their type in the world.

\$125 per person

THAI MASSAGE

FOLLOWED BY PRIVATE ONSEN & DRINKS

Get picked up from your hotel and taken for a full 1 hour thai massage, then 1 hour private onsen at the luxurious Traumerei Hotel.

\$140 per person

SKI/BOARD & EQUIPMENT HIRE

Liquid Snow Tours have teamed up with Central Snow Sports for all your ski and board hire requirements in the Hakuba Valley. Central Snowsports stocks the best and newest range of skis, ski clothing and snowboard products in Hakuba Village, Japan. All equipment is expertly maintained and conveniently located near the base of the Happo-One Gondola in the heart of Hakuba. By booking through Liquid Snow Tours you can also take advantage of a complimentary pick up and drop off service from your accommodation.

Please contact us for price information via email info@ski-resorts-japan.com or call 1300 4 LIQUID.

HAKUBA

HAKUBA DELUXE PROPERTIES

PHOENIX HOTEL



GAKUTO VILLAS



PACKAGE PRICE INCLUDES:

7 NIGHTS ACCOMMODATION, AIRPORT TRANSFERS, 5 DAY MULTI-RESORT LIFT PASS

Phoenix Hotel is Hakuba's premier full service property offering guests total comfort whether it may be just be a simple coffee, a 5 star a la carte meal at any time of the day or night, or offering pickups arrived in the Wadano area of Happo One.

Phoenix is here to serve your every luxurious need. Located in the popular Wadano area at the base of Happo One Resort, where much of the slope side accommodation is located, this property has been stylishly remodeled with 15 very comfortable well appointed rooms, featuring wide screen plasma TVs, Cable TV, iPod docks, high speed internet access and the very best in Japanese and western bedding.

\$1495 PER PERSON (BASED ON 2 PEOPLE)

+ ADD RETURN FLIGHTS FROM \$650 + TAXES
FLYING SINGAPORE AIRLINES (JAN 16-MAR 30 '12)

BONUS BOOKING SPECIAL: BOTTLE OF WINE IN THE BAR (MIN. 7 NIGHT BOOKING)

The first contemporary western development of its kind in the prestigious Wadano Mori district of Hakuba, Gakuto Villas is a community of 12 uniquely crafted terrace houses set to provide a distinctly comfortable and modern level of accommodation and service in one of the most popular ski destinations in Japan.

Minutes from ski lifts and a leisurely stroll from neighbourhood restaurants, bars and onsens, Gakuto Villas is a fusion of Western design and Japanese detailing, blending in perfectly with its natural and traditional surroundings.

\$1595 PER PERSON (BASED ON 2 PEOPLE)

+ ADD RETURN FLIGHTS FROM \$650 + TAXES
FLYING SINGAPORE AIRLINES (JAN 16-MAR 30 '12)

BONUS BOOKING SPECIAL: BOOK 7 NIGHTS, PAY 6

HAKUBA DELUXE PROPERTIES

TRAUMEREI FRENCH HOTEL



The Hotel is owned and operated by one of Japan's top wine and food critics, Nishino san. The hotel features indoor and outdoor onsen, cocktail and wine bar, suite rooms with spacious ensuite bathrooms, and the Traumerei restaurant serving the highest quality traditional French food.

\$1545 PER PERSON (BASED ON 2 PEOPLE)

BONUS BOOKING SPECIAL (MIN. 7 NIGHT BOOKING):
BOTTLE OF FRENCH CHAMPAGNE

PACKAGE PRICE INCLUDES:

7 NIGHTS ACCOMMODATION, AIRPORT TRANSFERS, 5 DAY MULTI-RESORT LIFT PASS

PHOENIX CHALETs



A new level of style and sophistication has arrived in the Wadano of Hakuba. These newly built, fully equipped 3 bedroom Chalets have stylish, spacious modern interiors and provide the ultimate winter escape, nestled nicely in the forest region.

\$1545 PER PERSON (BASED ON 6 PEOPLE)

BONUS BOOKING SPECIAL (MIN. 7 NIGHT BOOKING):
BOTTLE OF WINE IN THE BAR

HAPPO EXECUTIVE GONDOLA APARTMENTS



Located right next to Hakuba Happo One's main Gondola, these apartments are just 6 metres from the ski field and 30 metres from the Gondola entrance itself. Each fully self-contained apartment has direct views of the Happo-One ski field and picturesque Happo village.

\$1645 PER PERSON (BASED ON 6 PEOPLE)

BONUS BOOKING SPECIAL (MIN. 7 NIGHT BOOKING):
BOTTLE OF FRENCH CHAMPAGNE

RIDGE HOTEL



Perfectly located in the prestigious Wadano area at the base of the largest ski resort Happo One, the Australian owned hotel is a hidden jewel offering unparalleled Western style, luxury and service to the region. The Ridge offers a fresh and modern lodging experience.

\$1855 PER PERSON (BASED ON 2 PEOPLE)

BONUS BOOKING SPECIAL (MIN. 7 NIGHT BOOKING):
1/2 HR THAI MASSAGE EACH

HAKUBA VALUE PROPERTIES

PACKAGE PRICE INCLUDES:
7 NIGHTS ACCOMMODATION, AIRPORT TRANSFERS, 5 DAY MULTI-RESORT LIFT PASS



THE LAB HAKUBA DORM SHARE LODGE WITH PRIVATE TWIN ROOMS

A western style lodge with Japanese influences sleeps 60 guests and has fully serviced bar & restaurant serving great value meals.

\$1145 PER PERSON (BASED ON DORM SHARE ROOMS)



BROWNIE VILLAS SELF-CONTAINED VILLAS

Brownies Villas are located close to Echoland's main street, providing easy access to shops, restaurants, bars and other entertainment.

\$1195 PER PERSON (BASED ON 4-6 PEOPLE)



METEOR LOG HOUSE 7 BEDROOM LOG HOUSE

A Canadian style log cabin with a total of 7 deluxe rooms, the house has a capacity of 22, and is best when booked by an entire group.

\$1195 PER PERSON (BASED ON 14 PEOPLE)



ROSENHEIM HOTEL

This hotel offers a great location opposite Happo One lifts. Rooms are comfortable with private ensuite bathrooms, and indoor/outdoor onsens.

\$1245 PER PERSON (BASED ON 2 PEOPLE)



SHAKESPEARE HOTEL

The Shakespeare features western style rooms with ensuite, TV and fridge. It has easy access to all the shops, restaurants, bars, cafes and onsens.

\$1245 PER PERSON (BASED ON 2 PEOPLE)



MOMINOKI HOTEL

This hotel features a beautiful lobby with open fire place and lounge. There are onsens on site and 5 restaurants/pubs to choose from.

\$1695 PER PERSON (BASED ON 2 PEOPLE)



RESORT INFO

Niseko offers ski & board enthusiasts some of the best snow conditions in the world! With about 20 feet of snow in most areas the average during the season, there are plenty of great days to enjoy the snow. There is a growing trend that sees a large percentage of foreigners on the slopes, in particular Aussies, so expect to have no language problems when making your way around.

As well as the powder, the terrain offers a good mixture of beginner, intermediate and advanced runs, half-pipes, quarter pipes, table tops, mogul fields & tree runs to ensure everyone is happy!

Niseko is famous for its deep and fluffy powder snow. The resort area starts from an altitude close to sea-level and rises to 1200m, offering over 1000m in elevation. Niseko is made up of 57 runs consisting of 38 lifts and gondolas and totalling over 47 km in groomed slopes with the longest run being 5.6km.

DAY TOURS & ACTIVITIES

We can provide the following:

- Snowmobiling
- Private Onsens
- Backcountry tours
- Snowshoeing tours
- Spa treatments
- Food Delivery service (before arrival)

NISEKO

NISEKO DELUXE PROPERTIES

THE VALE NISEKO



YAMA SHIZEN



PACKAGE PRICE INCLUDES:

7 NIGHTS ACCOMMODATION, AIRPORT TRANSFERS, 5 DAY MULTI-RESORT LIFT PASS

The Vale Niseko, like the Badrutts Palace in St Moritz and Pan Pacific in Whistler, is a landmark property that defines the locale. From the blue hue of the outdoor thermal spas visible from Hirafu's Mountain top to the exalted entry and lobby, the award winning international design team offers the new symbol of Niseko.

The Vale has stunning views up the ski run, with personal onsens, open fireplaces and Niseko's first air conditioned apartments. The Vale offers spacious interiors featuring generous bedroom and living space and open plan bathrooms so guests can enjoy the alpine panoramas from the bathtub.

\$2595 PER PERSON (BASED ON 2 PEOPLE)

BONUS BOOKING SPECIAL: COMPLIMENTARY USE OF IN HOTEL ONSEN, SAUNA & OUTDOOR THERMAL HEATED POOL

Located 450 metres walk from the Ace Family Chair lift, Yama Shizen is located in the heart of the village, with excellent access to the slopes, shopping, hot springs, and all the best restaurants. In addition, the free 'Hanazono Shuttle Service' stops almost at the front door.

With lush, designer interiors, contemporary architecture and the latest in alpine materials, Yama Shizen offers superior levels of quality, comfort and privacy. Comprising 39 apartments in two buildings, the Yama Shizen is also the home to Hirafu's most prestigious restaurant, Kamimura's.

\$2360 PER PERSON (BASED ON 2 PEOPLE)

BONUS BOOKING SPECIAL: IN RESORT SKI CONCIERGE

NISEKO VALUE PROPERTIES

PACKAGE PRICE INCLUDES:
7 NIGHTS ACCOMMODATION, AIRPORT TRANSFERS, 5 DAY MULTI-RESORT LIFT PASS



CHILL LODGE LODGE

This lodge has it all, great central location, friendly atmosphere, beautiful views of Mount Yotei and the biggest most comfortable lounge in the village!

\$1145 PER PERSON (BASED ON 2 PEOPLE)



SLOWLIFE LODGE LODGE

Slowlife blends Western comfort with Japanese styling creating a unique relaxed atmosphere. In great condition, it has been recently refurbished.

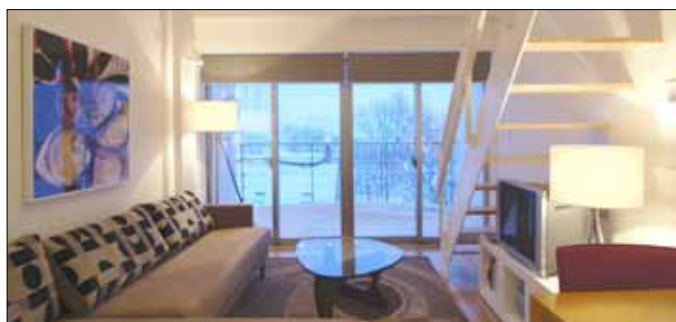
\$1195 PER PERSON (BASED ON 2 PEOPLE)



AVALON APARTMENTS 3 BEDROOM APARTMENT

Luxury Townhouses with large lounge and dining area. Balconies overlooking beautiful Mt. Yotei and Hirafu Ski Resort.

\$1345 PER PERSON (BASED ON 6 PEOPLE)



POWDER TRACKS 2 BEDROOM APARTMENT

Located 300m to a chairlift, this chic and comfortable building is surrounded by the best Hirafu has to offer in onsens, restaurants & bars.

\$1590 PER PERSON (BASED ON 4 PEOPLE)



DEEP TRACKS 2 BEDROOM APARTMENT

Deep Tracks is a combination of 1 and 2 bedroom modern apartments located opposite the main gondola station.

\$1590 PER PERSON (BASED ON 4 PEOPLE)



YOTEI TRACKS 2 BEDROOM APARTMENT

This upper village location can't be beaten. Just 350m from the Ace Family chair, the Shuttle Service stops at the front door.

\$1590 PER PERSON (BASED ON 4 PEOPLE)

NOZAWA ONSEN PROPERTIES

PACKAGE PRICE INCLUDES:

7 NIGHTS ACCOMMODATION, 4 DAY JR EAST RAIL PASS & 5 DAY NOZAWA ONSEN RESORT LIFT PASS



VILLA NOZAWA HOTEL

Japanese Style accommodation with comfortable futon bedding in large airy rooms, the Villa Nozawa is a great mid range option.

\$1295 PER PERSON (BASED ON 2 PEOPLE)



KAWAICHIYA RYOKAN HOTEL

This Japanese Hotel offers 2 different kinds of natural hot springs and traditional cuisine using local fresh ingredients.

\$1395 PER PERSON (BASED ON 2 PEOPLE)



NOZAWA GRAND HOTEL HOTEL

Elegantly designed utilizing modern Japanese architecture, there are six different very comfortable and relaxing new room styles.

\$1865 PER PERSON (BASED ON 2 PEOPLE)



SAKAYA RYOKAN HOTEL

The premier Japanese style hotel in Nozawa Onsen, it boasts an exquisite level of service and exceptional food in the Japanese restaurant.

\$1995 PER PERSON (BASED ON 2 PEOPLE)

RESORT INFO

Nozawa Onsen is a quaint mountain village north of Nagano City with an onsen that, according to legend, dates back to the 8th Century. The village center is a collection of ryokans (traditional Japanese inns),

and souvenir shops situated at the base of the Nozawa ski resort. Nozawa Onsen claims to be the birthplace of Japanese skiing, as it is one of the oldest resorts in Japan. Featuring a difference in elevation of 1,085 metres, 36 ski courses and 297 hectares of skiing surface Nozawa has the area, history and snow accumulation to make it one of Japan's top class ski resorts.

NOZAWA

SHIGA KOGEN PROPERTIES

PACKAGE PRICE INCLUDES:

7 NIGHTS ACCOMMODATION, 4 DAY JR EAST RAIL PASS & 5 DAY SHIGA KOGEN RESORT LIFT PASS



ALPEN GLOW HOTEL

Located right on the Bunadaira ski slope, which is a gentle hill perfect for beginners and children and still accessible to the rest of the resort.

\$1195 PER PERSON (BASED ON 2 PEOPLE)



SHIGA OLYMPIC HOTEL HOTEL

An excellently located hotel within the Ichinose village (centrally located in Shiga Kogen) directly across the road from the resort's chairlifts.

\$1495 PER PERSON (BASED ON 2 PEOPLE)



OKUSHIGA KOGEN HOTEL

Conveniently located just in front of lifts, there are Western style rooms, as well as a French and Japanese restaurant.

\$1695 PER PERSON (BASED ON 2 PEOPLE)

RESORT INFO

Shiga Kogen is a cosy ski resort nestled in the heart of the Nagano Prefecture. As Japan's largest resort, it is famous for its grand scale, wide range of ski terrain, amazing panoramic views, and powder snow.

This is the ultimate destination for the keen skier and snowboarder. The 21 ski fields of Shiga Kogen are all interconnected and accessible with one lift ticket, giving skiers and snowboarders an abundance of choice. Many lifts and gondolas have been upgraded in recent years meaning faster lift rides and more time spent on the slopes.



SHIGA PRINCE HOTEL

This large hotel is located at the base of the Yakebitaiyama ski area and offers customers fantastic ski-in/ski-out access.

\$1695 PER PERSON (BASED ON 2 PEOPLE)

SHIGA

MYOKO KOGEN PROPERTIES

PACKAGE PRICE INCLUDES:

7 NIGHTS ACCOMMODATION, 4 DAY JR EAST RAIL PASS & 5 DAY MYOKO KOGEN RESORT LIFT PASS



WINDSOR HOTEL HOTEL

Hotel Windsor has a superb view of the mountains, and is only a 5 minute walk to the nearest ski slope or a shuttle bus stops nearby.

\$1345 PER PERSON (BASED ON 2 PEOPLE)



KOUGAKURO HOTEL

Located near the base of the Akakura Onsen resort, Kougakuro is a Japanese-style ryokan offering traditional experience with hot springs.

\$1295 PER PERSON (BASED ON 2 PEOPLE)



AKAKURA HOTEL ANNEX HOTEL

Adjoining the Akakura Hotel, the Annex is only a short walk to the Akakura lifts and conveniently located within the ski village.

\$1295 PER PERSON (BASED ON 2 PEOPLE)



AKAKURA KANKO HOTEL

This European style building is situated right at the resort, has amazing panoramic views, 52 spacious rooms, and two hot springs.

\$2295 PER PERSON (BASED ON 2 PEOPLE)

RESORT INFO

A holiday in Myoko Kogen allows you to experience an amazing 13 metres of fresh snowfall annually, and is a place at the heart of traditional Japanese culture. There are beginner runs for those still learning,

and steep runs for those who have been carving for years, with the added joy of not waiting very long for the lifts. Located in north-central Honshu, (Japan's main island), Myoko is a traditional ski-town, and a very easily accessed area, where meeting new people and discovering new restaurants are all part of the fun!

MYOKO

TOKYO STOPOVER PROPERTIES



ACE INN CAPSULE HOTEL

The location of the Ace Inn is right in the heart of the Shinjuku district. Close to bars, restaurants, shopping and metros, it's the place to be in Tokyo.

\$55 PER PERSON, PER NIGHT



LISTEL HOTEL

Ideally situated in Shinjuku, its position offers an extremely quiet environment, yet is only a few minutes walk from the nearest subway.

\$95 PER PERSON, PER NIGHT (BASED ON 2 PEOPLE)



KEIO PLAZA HOTEL

Located in Shinjuku, this is suited for a more luxurious stay in Tokyo. The Tochomae metro station is 3 mins away.

\$120 PER PERSON, PER NIGHT (BASED ON 2 PEOPLE)

CITY INFO

The modern megalopolis of Tokyo is home to 12 million people, with 34 million in the immediate Kanto area. Tokyo has markedly fewer historical landmarks than other world capitals, but this gives visitors more time to

walk around the distinct neighbourhoods & mingle with locals in their technologically advanced, ultra-consumerist environment. Whilst you are in Tokyo be sure to visit the famous Tsukiji Fish Market, Akihabara (Tokyo's 'Electric Town' and home to otaku 'nerd' culture) and Asakusa for lots of temples and shrines.



SHINJUKU WASHINGTON HOTEL

A modern architectural marvel and located right next to Shinjuku station, there is even an underground tunnel connection!

\$105 PER PERSON, PER NIGHT (BASED ON 2 PEOPLE)

TOKYO

GROUP TRIPS

HAVE MORE THAN 4 PEOPLE IN YOUR ENTOURAGE?

We are happy to tailor packages to suit your club, university group or corporate requirements, and offer a 10% discount for group sizes of 10 or more. All budgets are catered for with dorm-share, hotel or self-contained accommodation options.

PLEASE CALL US ON 1300 4 LIQUID OR EMAIL INFO@SKI-RESORTS-JAPAN.COM TO DISCUSS YOUR SPECIFIC NEEDS & RECEIVE A TAILORED QUOTE.

SOCIAL MEDIA

RECEIVE FACEBOOK EXCLUSIVE DEALS SIMPLY BY 'LIKING' US!

HEAD TO:
[FACEBOOK.COM/LIQUIDSNOWTOURS](https://www.facebook.com/liquidsnowtours)

OR LEARN ABOUT ALL DEALS VIA TWITTER
FOLLOW US [@SKIRESORTSJAPAN](https://twitter.com/SKIRESORTSJAPAN)

facebook **twitter**

JUMP ONLINE & GRAB AN EASY INSTANT QUOTE

JUMP ON OUR WEBSITE
SKI-RESORTS-JAPAN.COM

& CREATE YOUR OWN
CUSTOM PACKAGE!

AND FIND OUT THE LATEST ON:

- FLIGHT & TRAVEL INFO
- DETAILED RESORT INFO
- FRESH SNOW REPORTS & TRAIL MAPS
- HOT MONTHLY SPECIALS
- + MUCH, MUCH MORE



Photo credits
Front Cover, pg. 3, 4 & Inside Back Cover
Big Thanks to Dominic Kieler. dominickieler.blogspot.com

Back Cover - Rich Glass Photography. richglass.ca

WE GO WORLDWIDE!

- NEW ZEALAND SHRED & HELISKI PACKAGES
- WHISTLER SKI/BOARD PROGRESSION CAMPS
- NORTH AMERICAN SKI/BOARD PACKAGES
- ALASKA HELISKI TOURS



FOR THE WORLDWIDE SKI DEALS HEAD TO
LIQUIDSNOWTOURS.COM
OR CALL 1300 4 LIQUID

OR EMAIL BOOKINGS@SNOWTOUR.COM.AU

FOR FULL TERMS & CONDITIONS WITH BOOKING/CANCELLATION POLICY
SKI-RESORTS-JAPAN.COM/TERMS-CONDITIONS

TRAVEL AGENT LIC NO. 32732

REGISTERED WITH TCF.ORG.AU